



# **SOUTH AUSTRALIAN ECONOMIC INDICATORS**

EMBARGO: 11:30AM (CANBERRA TIME) MON 3 APR 2000

## **C O N T E N T S**

	<i>page</i>
Notes .....	2
REVIEW	
South Australian overview .....	3
Selected features .....	4
TABLES	
List of tables. ....	5
Statistical summary. ....	6
State summary. ....	8
State accounts. ....	9
International trade. ....	10
Consumption and investment. ....	14
Production. ....	16
Consumer price index. ....	20
Labour force and demography. ....	21
Average weekly earnings. ....	24
Financial markets. ....	25
ADDITIONAL INFORMATION	
Publications source index. ....	26

- For further information about these and related statistics, contact Rachel Smith on Adelaide 08 8237 7395, or Client Services in any ABS office as shown on the back cover of this publication.

## NOTES

### FORTHCOMING ISSUES

<i>ISSUE</i>	<i>RELEASE DATE</i>
May 2000	1 May 2000
June 2000	1 June 2000
July 2000	3 July 2000
August 2000	1 August 2000
September 2000	1 September 2000
October 2000	3 October 2000

### ABOUT THIS PUBLICATION

*South Australian Economic Indicators* is a monthly publication which contains the latest available data at the time of preparation for a range of statistical series that have been identified as indicators of economic activity in this State. In a number of cases the figures presented are preliminary and subject to revision in subsequent issues.

### SYMBOLS AND OTHER USAGES

n.a.	not available
n.y.a.	not yet available
*	subject to sampling variability too high for most practical purposes
..	not applicable
0, 0.0	nil, or rounded to zero

### ROUNDING

Where figures have been rounded, discrepancies may occur between sums of the component items and totals.

### INFORMATION

All data are original, unless otherwise stated. More detailed information on each series, including explanatory and technical notes, can be obtained from other Australian Bureau of Statistics publications or alternative data sources. To assist those seeking further information, each of the data series presented in the statistical and State summaries tables are referenced to the Publication Source Index at the end of this publication.

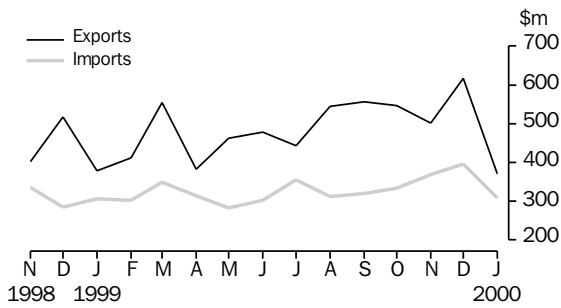
I. Crettenden  
Regional Director  
South Australia

## OVERVIEW

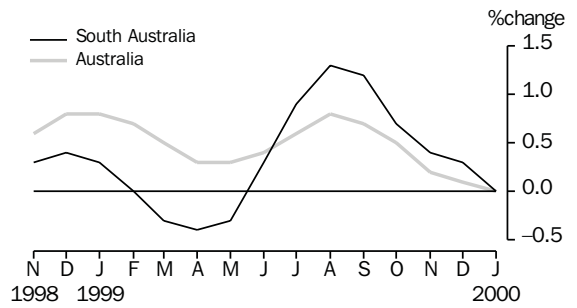
INTERNATIONAL TRADE	<p>The value of South Australian merchandise exports for the month of January 2000 was \$370.4m. This is \$246m (40%) less than the record value for December 1999. January is generally a lower than average month for exports and is down 1.8% on January 1999.</p> <p>The value of merchandise imports released from Customs control in South Australia was \$308.5m in January 2000.</p>
CONSUMPTION AND INVESTMENT	<p>The trend estimate of retail turnover in South Australia rose for the eighth consecutive month in January 2000, to \$883.1m.</p> <p>The trend estimate for new motor vehicle registrations rose for the fifth consecutive month to be 4,027 in January 2000. This was 3.7% below the level of 12 months ago (4,180). In original terms, there were 2,926 new motor vehicle registrations in January 2000, a fall of 3.9% when compared with January 1999.</p> <p>The trend estimate for private new capital expenditure (in current prices) decreased by \$21.0m (3.7%) in the December quarter 1999 to be \$542.0m. Expenditure on buildings rose by 3.6% while expenditure on equipment fell by 5.5%. In original terms private new capital expenditure for the quarter was \$539.0m.</p>
PRODUCTION	<p>The trend estimate for private sector houses has continued to grow strongly, increasing 6.1% in January and is now 70.8% above the last low in December 1998. The trend estimate for total dwelling units increased 5.5%. Increases totalling 64.8% have now been recorded since December 1998.</p>
CONSUMER PRICE INDEX	<p>The Consumer Price Index (all groups) in Adelaide increased by 0.5% to 125.7 in the December quarter of 1999, and by 1.7% over the level of twelve months ago. The main contributors to the recent quarterly growth were Tobacco and alcohol (up by 1.9%) and Housing (2.0%).</p>
LABOUR FORCE AND DEMOGRAPHY	<p>The trend estimate of employed persons in South Australia has increased since July 1998. The estimate for February 2000 (677,800) is 3.2% higher than the level of 12 months ago (656,500).</p> <p>The trend estimate of the unemployment rate for South Australia has generally decreased since July 1998 reaching 8.1% in recent months. The current level is lower than the 9.0% recorded in February 1999.</p>
FINANCIAL MARKETS	<p>The trend estimate of the value of secured housing finance commitments (excluding alterations and additions) increased by 0.5% in January, with the rate of growth continuing to decline for the seventh consecutive month. In seasonally adjusted terms, the value increased 5.5% to \$383.0m, 42.9% higher than January 1999.</p>

## SELECTED FEATURES

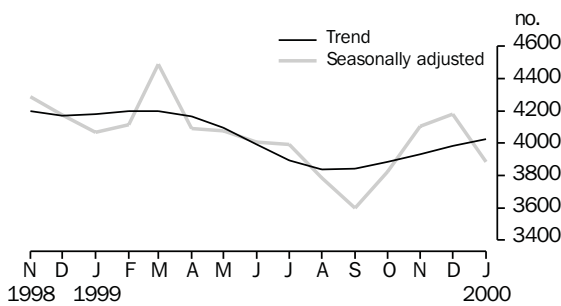
MERCHANDISE EXPORTS AND IMPORTS



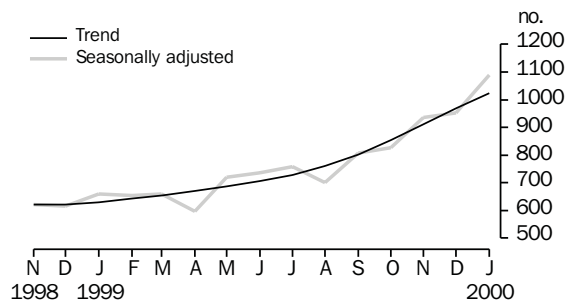
RETAIL TURNOVER: TREND



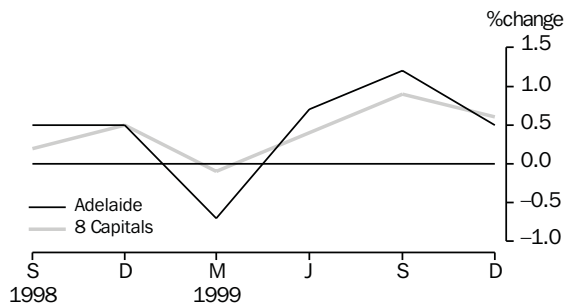
NEW MOTOR VEHICLE REGISTRATIONS



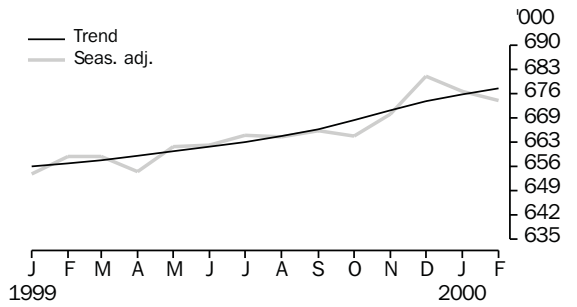
DWELLING UNITS APPROVED



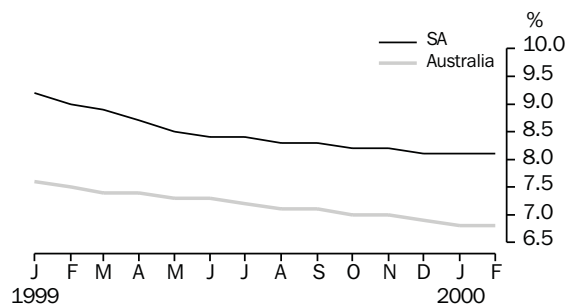
CONSUMER PRICE INDEX



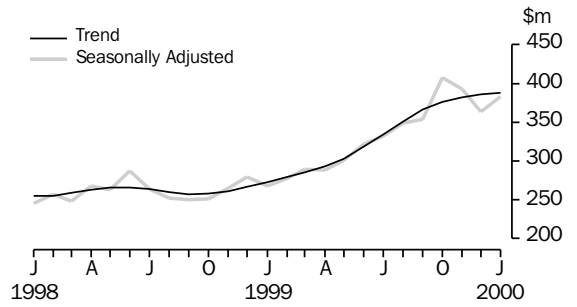
EMPLOYED PERSONS



UNEMPLOYMENT RATE: TREND



SECURED HOUSING FINANCE COMMITMENTS (a)



(a) Excludes alterations and additions. Includes refinancing.

## LIST OF TABLES

			Page
STATISTICAL SUMMARY	<b>1</b>	Statistical summary	6
	<b>2</b>	State summary	8
STATE ACCOUNTS	<b>3</b>	State accounts at current prices	9
	<b>4</b>	State accounts at chain volume measures	9
INTERNATIONAL TRADE	<b>5</b>	Merchandise exports, by selected commodity group	10
	<b>6</b>	Merchandise exports, by selected countries	11
	<b>7</b>	Merchandise exports, by industry of origin	12
	<b>8</b>	Merchandise imports, by selected commodity group	13
CONSUMPTION AND INVESTMENT	<b>9</b>	Turnover of retail establishments, by industry—trend	14
	<b>10</b>	New motor vehicle registrations, by type of vehicle	14
	<b>11</b>	Actual private new capital expenditure, by selected industry and type of asset	15
	<b>12</b>	Tourist accommodation	15
PRODUCTION	<b>13</b>	Building approvals	16
	<b>14</b>	Building commencements	17
	<b>15</b>	Value of building work done and completed during period	18
	<b>16</b>	Production, livestock products and selected commodities	19
CONSUMER PRICE INDEX	<b>17</b>	Consumer price index, by group—Adelaide	20
LABOUR FORCE AND DEMOGRAPHY	<b>18</b>	Estimated resident population and components of population change	21
	<b>19</b>	Births, deaths, marriages and divorces	21
	<b>20</b>	Civilian labour force status	22
	<b>21</b>	Civilian labour force, unemployment and participation rates	23
AVERAGE WEEKLY EARNINGS	<b>22</b>	Average weekly earnings of employees	24
FINANCIAL MARKETS	<b>23</b>	Secured housing finance commitments	25
	<b>24</b>	Finance commitments	25

Indicator	Period	South Australia			Australia			SA as a % of Aust.	Source index
		Number	% change from		Number	% change from			
			Previous period	Same period previous year		Previous period	Same period previous year		
<b>State accounts</b>									
Domestic final demand									
Current prices trend (\$m)	Dec qtr 99	11 119	2.5	7.7	157 532	1.2	5.4	7.1	(1)
Chain volume measures trend (\$m)	Dec qtr 99	10 836	2.0	6.5	154 655	1.1	4.9	7.0	(1)
Private final consumption expenditure									
Current prices trend (\$m)	Dec qtr 99	6 586	1.6	4.0	91 830	1.3	5.4	7.2	(1)
Chain volume measures trend (\$m)	Dec qtr 99	6 422	1.2	2.5	89 911	1.1	4.3	7.1	(1)
Private gross fixed capital formation									
Current prices trend (\$m)	Dec qtr 99	1 657	0.6	8.3	29 303	-0.9	0.6	5.7	(1)
Chain volume measures trend (\$m)	Dec qtr 99	1 627	0.2	9.4	29 145	-0.6	2.0	5.6	(1)
Compensation of employees									
Current prices trend (\$m)	Dec qtr 99	4 991	0.2	4.0	75 065	1.2	4.6	6.6	(1)
<b>International accounts</b>									
Exports (\$m)	Jan 00	370.4	-39.9	-1.8	6 403.1	-18.9	9.0	5.8	(2)
Imports (\$m)	Jan 00	308.5	-21.9	0.6	8 114.4	-8.9	12.2	3.8	(2)
<b>Consumption and investment</b>									
Retail turnover									
Current prices original (\$m)	Jan 00	855.6	-25.2	2.4	11 623.5	-26.6	2.3	7.4	(3)
Current prices trend (\$m)	Jan 00	883.1	0.0	4.1	12 034.9	0.0	5.1	7.3	(3)
1997-98 chain volume measures (\$m)	Dec 99	2 877.3	17.4	3.5	39 475.7	16.6	6.8	7.3	(3)
New motor vehicle registrations									
Original (no.)	Jan 00	2 926	-33.8	-3.9	50 291	-24.5	0.4	5.8	(4)
Trend (no.)	Jan 00	4 027	1.1	-3.7	63 888	1.5	-3.8	6.3	(4)
Private new capital expenditure									
Current prices original (\$m)	Dec qtr 99	539	-13.8	-18.8	10 950	2.8	-8.4	4.9	(5)
Current prices trend (\$m)	Dec qtr 99	542	-3.7	-7.2	10 355	-1.7	-10.4	5.2	(5)
Private new capital expenditure (\$m)	1998-99	2 277	..	-28.7	44 607	..	-3.5	5.1	(5)
Takings, licensed hotels, motels, guest houses and apartments with facilities (\$m)									
	Sep qtr 99	44.0	-0.9	3.5	1 077.8	13.9	8.0	4.1	(6)
<b>Production</b>									
Dwelling unit approvals									
Original (no.)	Jan 00	712	-15.4	60.4	12 734	-10.8	26.7	5.6	(7)
Trend (no.)	Jan 00	1 022	5.5	62.5	15 530	1.8	19.2	6.6	(7)
Dwelling units commenced (no.)	Sep qtr99	2 153	17.9	8.7	42 042	10.4	5.8	5.1	(8a)
Value of non-residential building approvals (\$m)									
	Jan 00	18.5	-85.7	-72.8	881.7	6.6	-13.7	2.1	(7)
Value of total building activity									
Commenced (\$m)	Sep qtr 99	401.2	16.4	14.4	9 204.4	13.9	8.7	4.4	(8)
Work done (\$m)	Sep qtr 99	430.6	24.4	12.3	9 468.8	4.4	9.1	4.5	(8)
Work yet to be done (\$m)	Sep qtr 99	432.4	-4.3	38.9	12 776.1	2.9	-7.4	3.4	(8)
Value of engineering construction work done (\$m)									
	Sep qtr 99	364.0	42.4	48.9	4 368.5	-12.5	1.1	8.3	(9)
Manufacturing production									
Red meat (tonnes)	Dec qtr 99	46 644	11.8	-9.8	737 996	-1.4	-3.0	6.3	(11)
Mineral exploration expenditure (other than for petroleum) (\$m)									
	Dec qtr 99	6.7	3.1	-24.7	176.9	-1.8	-26.2	3.8	(12)

Indicator	Period	South Australia			Australia			SA as a % of Aust.	Source index
		Number	% change from		Number	% change from			
			Previous period	Same period previous year		Previous period	Same period previous year		
<b>Prices(a)</b>									
CPI—All groups (index no.)	Dec qtr 99	125.7	0.5	1.7	124.1	0.6	1.8	..	(13)
Price index of materials used in house building (index no.)	Dec qtr 99	126.0	0.4	0.6	121.5	0.8	1.5	..	(14)
Price index of materials used in building other than houses (index no.)	Dec qtr 99	115.4	0.2	-0.2	115.4	0.2	0.2	..	(15)
Price index of established houses (index no.)	Dec qtr 99	122.0	1.6	8.0	141.3	3.3	9.5	..	(16)
Price index of project homes (index no.)	Dec qtr 99	126.7	4.1	9.0	120.6	3.1	7.4	..	(16)
<b>Labour force and demography</b>									
Population (resident at end qtr) ('000)	Sep qtr 99	1 494.8	0.1	0.5	19 021.4	0.3	1.2	7.9	(17)
Short-term overseas visitor arrivals (no.)	Dec 99	15 770	51.9	19.7	460 780	10.6	0.7	3.4	(21)
Short-term resident departures (no.)	Dec 99	12 080	18.8	-9.1	309 280	26.6	-2.8	3.9	(21)
Labour force									
Original ('000)	Feb 00	741.1	1.8	2.1	9 623.8	1.6	2.1	7.7	(18)
Trend ('000)	Feb 00	737.5	0.2	2.2	9 587.5	0.1	2.0	7.7	(18)
Employed persons									
Original ('000)	Feb 00	672.6	1.0	2.4	8 905.1	1.5	3.0	7.6	(18)
Trend ('000)	Feb 00	677.8	0.2	3.2	8 938.3	0.2	2.8	7.6	(18)
Participation rate									
Original(b) (%)	Feb 00	61.6	1.0	0.8	63.6	1.0	0.3	..	(18)
Trend(b) (%)	Feb 00	61.3	0.1	0.9	63.4	0.0	0.4	..	(18)
Unemployment rate									
Original(b) (%)	Feb 00	9.3	0.8	-0.2	7.5	0.1	-0.8	..	(18)
Trend(b) (%)	Feb 00	8.1	0.0	-0.9	6.8	0.0	-0.7	..	(18)
Job vacancies ('000)	Nov 99	6.3	28.6	5.0	103.2	-6.2	6.2	6.1	(19)
Industrial disputes ('000 working days lost)	Dec 99	1.0	-9.1	-78.3	40.9	-72.7	-19.8	2.4	(20)
<b>Income</b>									
Average weekly earnings (full-time adults; ordinary time)									
Original (\$)	Nov 99	705.70	0.5	0.5	763.20	1.5	3.0	..	(22)
Trend (\$)	Nov 99	707.30	0.6	1.1	762.00	0.9	2.8	..	(22)
Wage cost index (total hourly rate excluding bonuses)(c) (index no.)	Dec 99	106.8	0.8	2.9	107.0	0.6	3.0	..	(23)
<b>Financial markets</b>									
Secured housing finance(d) (\$m)	Jan 99	314.0	-19.5	45.4	5 175.0	-21.5	29.1	6.1	(24)
Finance commitments									
Personal (\$m)	Dec 99	268.5	-4.2	-2.1	4 298.2	-4.6	9.9	6.2	(25)
Commercial (\$m)	Dec 99	676.8	32.4	17.9	14 791.8	15.3	-7.4	4.6	(25)
Lease (\$m)	Dec 99	13.4	5.3	-23.4	746.0	14.8	-17.3	1.8	(25)
Interest rates									
Banks new housing loans(b) (%)	Feb 00	..	..	..	7.30	0.00	0.80	..	(26)
Bank loans—small, medium business(b)(e) (%)	Feb 00	..	..	..	8.25	0.50	0.70	..	(26)
Bank loans—large business(b) (%)	Feb 00	..	..	..	8.75	0.50	0.80	..	(26)

(a) Base year of each index 1989-90=100.

(b) Change is shown in terms of percentage points.

(c) Base year of index Sep 1997=100.

(d) Excludes alterations and additions. Includes refinancing.

(e) Rate for business loans over \$50,000.

## 2

## STATE SUMMARY

Indicator	Period	NSW	Vic.	Qld	SA	WA	Tas.	NT	ACT	Source index
SELECTED INDICATORS										
CPI—All groups(a) (index no.)	Dec qtr 99	124.7	123.5	124.1	<b>125.7</b>	122.7	124.0	123.6	123.7	(13)
Participation rate trend (%)	Feb 00	62.0	62.8	65.0	<b>61.3</b>	67.2	59.1	67.6	73.3	(18)
Unemployment rate trend (%)	Feb 00	5.9	6.7	8.0	<b>8.1</b>	6.4	9.0	5.3	5.3	(18)
Average weekly earnings (full-time adults; ordinary time) trend (\$)	Nov 99	800.80	750.50	706.10	<b>707.30</b>	775.30	714.50	780.70	887.50	(22)

## SELECTED INDICATORS PER HEAD OF POPULATION(b)

State final demand										
Chain volume measures trend (\$'000)	Dec qtr 99	8.3	8.1	7.6	<b>7.2</b>	8.2	6.6	10.4	15.8	(1)
Retail turnover										
Current prices original (\$)	Jan 00	628.7	584.4	628.8	<b>572.4</b>	617.2	549.0	604.3	704.7	(3)
Current prices trend (\$)	Jan 00	648.7	613.6	639.9	<b>590.8</b>	637.9	572.8	686.5	748.5	(3)
New motor vehicle registrations trend (no. per '000 population)	Jan 00	3.5	3.9	2.9	<b>2.7</b>	3.2	2.7	3.6	3.6	(4)
Private new capital expenditure										
Current prices trend (\$)	Dec qtr 99	532.9	588.6	499.8	<b>362.6</b>	768.7	231.8	1 349.2	283.2	(5)
Dwelling unit approvals										
Original (no. per '000 population)	Jan 00	0.545	0.813	0.698	<b>0.476</b>	0.897	0.385	0.589	0.798	(7)
Trend (no. per '000 population)	Jan 00	0.638	0.955	0.920	<b>0.684</b>	1.163	0.389	0.786	0.801	(7)
Secured housing finance(c) (\$)	Jan 00	312.7	262.8	218.4	<b>210.1</b>	342.6	112.7	243.0	318.6	(24)

## PERCENTAGE CHANGE FROM PREVIOUS PERIOD

State final demand										
Chain volume measures trend (%)	Dec qtr 99	1.0	1.3	0.5	<b>2.0</b>	0.9	0.3	0.0	1.9	(1)
Retail turnover										
Current prices original (%)	Jan 00	-26.5	-29.6	-23.4	<b>-25.2</b>	-25.9	-29.3	-22.3	-28.4	(3)
Current prices trend (%)	Jan 00	-0.1	-0.4	0.4	<b>0.0</b>	0.2	-0.2	1.0	0.6	(3)
New motor vehicle registrations trend (%)	Jan 00	0.4	3.2	0.9	<b>1.1</b>	1.9	1.7	-0.3	1.0	(4)
Private new capital expenditure										
Current prices trend (%)	Dec qtr 99	-2.0	-1.8	0.3	<b>-3.7</b>	-3.3	-1.8	6.5	15.8	(5)
Dwelling unit approvals										
Original (%)	Jan 00	-15.6	-4.4	-12.4	<b>-15.4</b>	-15.2	0.6	-26.9	81.0	(7)
Trend (%)	Jan 00	-1.7	3.2	4.0	<b>5.5</b>	1.6	4.2	4.4	5.5	(7)
CPI—All groups (%)	Dec qtr 99	0.5	0.7	0.1	<b>0.5</b>	0.7	0.6	0.6	1.1	(13)
Participation rate trend(d) (%)	Feb 00	0.1	0.0	0.0	<b>0.1</b>	0.0	0.0	-0.7	0.0	(18)
Unemployment rate trend(d) (%)	Feb 00	0.0	-0.1	0.0	<b>0.0</b>	-0.1	-0.1	0.3	-0.1	(18)
Average weekly earnings (full-time adults; ordinary time) trend (%)	Nov 99	0.8	0.9	0.2	<b>0.6</b>	1.6	1.1	1.6	3.0	(22)
Secured housing finance (%)	Jan 00	-24.8	-22.0	-18.2	<b>-19.5</b>	-14.3	-20.9	-9.6	-23.8	(24)

(a) Base year of index 1989-90 = 100.

(b) The latest quarterly estimate of Australian resident population has been used to calculate ratios for subsequent periods.

(c) Excludes alterations and additions. Includes refinancing.

(d) Change is shown in terms of percentage points.



### 3

#### STATE ACCOUNTS AT CURRENT PRICES

Period	Final consumption expenditure		Gross fixed capital formation		State final demand	Gross State product (I)	Compensation of employees
	Households	General government	Private	Public			
ANNUAL (\$m)							
<b>1996-97</b>	22 996	7 439	5 755	1 444	37 634	36 967	18 139
<b>1997-98</b>	24 390	7 907	6 705	1 310	40 312	39 652	18 905
<b>1998-99</b>	25 534	8 017	6 173	1 374	41 098	40 573	19 284
QUARTERLY (\$m)							
<b>1998-99</b>							
September	6 284	2 078	1 584	264	10 210	n.a.	4 785
December	6 693	2 218	1 721	318	10 951	n.a.	4 922
March	6 128	1 995	1 365	346	9 833	n.a.	4 715
June	6 254	2 209	1 496	445	10 403	n.a.	4 939
<b>1999-00</b>							
September	6 484	2 353	1 859	331	11 028	n.a.	5 012
December	6 981	2 482	1 657	408	11 527	n.a.	5 137

Source: Australian National Accounts: Quarterly State Details (Cat. no. 5206.0.40.001), and Australian National Accounts: State Accounts (Cat. no. 5220.0).

### 4

#### STATE ACCOUNTS AT CHAIN VOLUME MEASURES(a)

Period	Final consumption expenditure		Gross fixed capital formation		State final demand	Gross State product (I)
	Households	General government	Private	Public		
ANNUAL (\$m)						
<b>1996-97</b>	23 248	7 513	5 824	1 439	38 020	37 264
<b>1997-98</b>	24 390	7 907	6 714	1 309	40 320	39 652
<b>1998-99</b>	25 200	7 841	6 066	1 386	40 493	40 493
QUARTERLY (\$m)						
<b>1998-99</b>						
September	6 229	2 042	1 547	265	10 084	n.a.
December	6 615	2 182	1 683	321	10 801	n.a.
March	6 055	1 929	1 337	350	9 671	n.a.
June	6 134	2 157	1 486	451	10 229	n.a.
<b>1999-00</b>						
September	6 331	2 276	1 838	341	10 786	n.a.
December	6 827	2 397	1 625	420	11 269	n.a.

(a) Reference year for chain volume measures is 1996-97.

Source: Australian National Accounts: Quarterly State Details (Cat. no. 5206.0.40.001), and Australian National Accounts: State Accounts (Cat. no. 5220.0).

## 5

## MERCHANDISE EXPORTS, BY SELECTED COMMODITY GROUP(a)

<i>Period</i>	<i>Meat and meat preparations</i>	<i>Cereals and cereal preparations(b)</i>	<i>Wine</i>	<i>Wool and sheepskins</i>	<i>Machinery</i>	<i>Metals and metal manufactures</i>	<i>Fish and crustaceans</i>	<i>Road vehicles, parts and accessories</i>	<i>Petroleum and petroleum products</i>	<i>Total</i>
	\$'000	\$'000	\$'000	\$'000	\$'000	\$'000	\$'000	\$'000	\$'000	\$'000
<b>1996-97</b>	182 478	745 227	397 949	260 974	378 923	542 204	191 093	655 881	286 458	5 009 345
<b>1997-98</b>	218 252	762 415	564 083	287 824	401 749	574 407	236 353	479 396	237 824	4 986 705
<b>1998-99</b>	198 541	815 963	693 728	212 226	385 167	543 675	252 592	652 010	154 425	5 335 814
<b>1998-99</b>										
August	12 036	83 764	54 365	14 136	30 391	51 467	30 657	43 037	20 669	457 962
September	17 730	84 104	70 084	21 737	30 230	39 773	28 826	82 634	12 086	478 849
October	20 302	57 758	72 262	23 109	28 835	39 298	16 321	45 615	19 012	421 250
November	23 420	34 771	40 014	23 410	33 813	44 046	15 738	76 332	8 740	402 198
December	21 990	118 841	48 409	21 800	39 439	46 039	18 732	72 038	22 904	518 177
January	12 512	139 418	39 131	10 991	20 713	32 232	20 641	17 334	3 544	376 973
February	19 308	43 302	50 984	18 309	29 483	47 209	20 912	23 346	8 932	410 957
March	17 378	73 094	66 841	16 754	29 520	58 757	18 415	102 036	11 714	554 207
April	12 617	38 467	56 286	10 319	41 314	39 915	20 369	26 728	4 080	382 392
May	16 087	42 140	69 509	20 656	34 714	57 271	20 328	28 122	19 003	462 104
June	13 274	49 128	77 522	13 202	29 477	50 927	17 824	90 644	14 832	478 827
<b>1999-00</b>										
July	11 764	32 723	56 428	10 288	29 602	53 204	30 310	41 016	16 088	441 957
August	7 777	39 196	78 607	12 680	27 065	61 879	81 050	97 193	2 428	543 370
September	10 287	56 982	95 099	15 114	37 265	57 003	57 030	59 781	17 842	556 506
October	12 408	56 446	91 599	16 327	29 985	69 728	28 318	65 627	28 792	546 861
November	13 487	11 498	50 440	16 320	31 100	70 069	26 161	141 559	3 439	501 101
December	12 104	75 739	47 838	12 986	26 362	71 535	21 166	179 284	19 102	616 384
January	11 506	44 453	42 559	9 555	19 792	49 145	24 200	24 443	17 727	370 357

(a) Restrictions are placed on the release of statistics for certain commodities for reasons of confidentiality. These restrictions do not affect total export and import figures, but they can affect some items within commodity, industry and country tables. See *International Trade* (Cat. no. 5422.0), Explanatory Notes, paragraph 30, for more details.

(b) The latest 12 months of bulk barley exports data—as included in the Cereals and cereal preparations group—are confidential. Bulk barley details are only included in the data for earlier periods.

Source: Unpublished data, *International Merchandise Trade*.

## 6

## MERCHANDISE EXPORTS, BY SELECTED COUNTRIES

Period	European Union					East Asia				
	Unites States of America	Middle East	United Kingdom	Total European Union	New Zealand	Japan	China	Hong Kong	ASEAN	Total East Asia
	\$'000	\$'000	\$'000	\$'000	\$'000	\$'000	\$'000	\$'000	\$'000	\$'000
<b>1996-97</b>	707 871	563 409	304 645	641 308	382 103	611 870	244 917	234 547	615 943	2 030 435
<b>1997-98</b>	632 203	389 766	424 251	849 932	354 698	612 475	331 489	239 652	491 573	2 023 385
<b>1998-99</b>	705 166	640 412	476 340	928 468	388 967	625 536	302 776	219 536	432 730	1 898 843
<b>1998-99</b>										
August	34 075	33 052	46 093	82 475	33 707	75 232	23 384	16 548	45 343	183 754
September	87 466	53 605	47 456	82 522	32 194	72 491	26 358	16 476	24 026	161 882
October	39 435	43 420	50 012	84 179	31 677	41 429	33 269	20 642	29 472	145 414
November	85 490	33 540	23 911	43 607	29 428	33 475	39 460	19 539	41 004	163 881
December	72 375	108 902	31 536	82 608	31 828	52 344	17 915	25 466	39 024	172 897
January	25 730	91 222	27 983	62 250	20 912	26 002	31 133	16 119	19 791	114 037
February	33 065	39 031	32 558	78 213	29 617	52 745	20 986	21 834	35 769	157 442
March	83 983	87 010	48 802	96 079	34 227	62 499	29 294	17 954	47 444	189 083
April	45 095	34 532	36 364	73 442	29 922	33 779	17 751	15 279	41 873	133 758
May	50 172	41 235	44 124	95 851	31 753	73 576	29 447	16 125	35 990	189 921
June	98 299	38 031	49 708	80 488	47 041	54 066	22 775	13 782	47 319	159 298
<b>1999-00</b>										
July	54 593	31 570	39 127	80 383	39 273	72 253	16 859	15 394	27 998	162 944
August	87 288	50 910	58 622	101 012	46 388	104 011	18 156	13 326	36 480	202 371
September	57 058	41 511	73 174	112 056	44 228	94 389	31 426	22 587	43 854	214 609
October	46 361	80 029	78 330	117 634	49 621	62 459	32 529	25 385	40 014	203 073
November	101 338	82 396	33 828	67 501	40 063	36 313	30 717	22 465	46 773	169 338
December	147 864	130 708	36 346	76 096	37 161	40 107	14 142	26 945	40 667	170 475
January	38 925	50 896	29 718	62 719	21 229	37 422	19 833	28 300	25 503	141 685

Source: Unpublished data, International Merchandise Trade.

Period	Manufacturing								Total
	Agriculture, forestry and fishing(b)	Mining	Food, beverages and tobacco	Petroleum, coal, chemical associated product	Metal product	Machinery and equipment	Other manu- facturing	Other industries/ confidential	
	\$'000	\$'000	\$'000	\$'000	\$'000	\$'000	\$'000	\$'000	\$'000
<b>1996-97</b>	1 067 084	202 162	981 918	290 361	569 679	1 140 136	226 780	531 226	5 009 345
<b>1997-98</b>	1 188 938	137 851	1 205 265	292 175	615 344	994 597	262 815	289 719	4 986 705
<b>1998-99</b>	1 238 907	73 125	1 282 013	285 053	581 372	1 175 876	264 973	434 495	5 335 814
<b>1998-99</b>									
August	114 502	8 725	100 942	34 630	53 203	90 632	19 941	35 386	457 962
September	115 557	1 066	117 539	26 209	40 577	122 096	21 894	33 912	478 849
October	90 916	9 066	123 467	27 700	41 345	85 546	21 252	21 958	421 250
November	67 563	14 644	90 065	19 311	48 123	123 267	20 329	18 896	402 198
December	151 283	7 760	104 117	32 699	51 955	121 086	22 841	26 435	518 177
January	164 950	1 112	78 750	13 057	33 004	46 525	18 209	21 366	376 973
February	99 744	9 484	102 252	19 255	49 565	63 347	21 822	45 487	410 957
March	121 061	511	114 334	23 276	63 539	145 843	30 604	55 041	554 207
April	62 407	7 741	105 733	14 469	41 171	79 508	26 041	45 321	382 392
May	86 206	8 781	122 596	30 879	61 320	73 034	24 787	54 501	462 104
June	74 256	3 320	122 939	26 617	54 826	132 303	19 834	44 733	478 827
<b>1999-00</b>									
July	63 729	7 380	120 642	26 813	54 441	84 376	19 700	64 876	441 957
August	67 671	9 096	118 366	14 845	63 726	139 116	23 206	107 343	543 370
September	74 402	1 155	168 995	30 754	60 553	115 329	20 172	85 146	556 506
October	85 540	30 427	143 971	29 011	71 232	110 765	24 367	51 548	546 861
November	41 547	7 771	96 476	16 148	72 647	186 031	22 390	58 092	501 101
December	102 244	23 130	86 789	34 287	75 511	220 015	20 138	54 269	616 384
January	80 529	1 742	84 125	26 698	50 312	53 479	16 925	56 547	370 357

(a) Restrictions are placed on the release of statistics for certain commodities for reasons of confidentiality. These restrictions do not affect total export and import figures, but they can affect some items within commodity, industry and country tables. See *International Trade* (Cat. no. 5422.0), Explanatory Notes, paragraph 30, for more details.

(b) The latest 12 months of bulk barley exports data—as included in the Agriculture, forestry and fishing group—are confidential. Bulk barley details are only included in the data for earlier periods.

Source: Unpublished data, *International Merchandise Trade*.

## 8

## MERCHANDISE IMPORTS, BY SELECTED COMMODITY GROUP(a)

<i>Period</i>	<i>Food, beverages and tobacco</i>	<i>Petroleum and petroleum products</i>	<i>Chemicals</i>	<i>Textiles</i>	<i>Metals and metal manufactures</i>	<i>Machinery</i>	<i>Road vehicle parts and accessories</i>	<i>Other manufactured goods</i>	<i>Total</i>
	\$'000	\$'000	\$'000	\$'000	\$'000	\$'000	\$'000	\$'000	\$'000
<b>1996-97</b>	136 695	505 633	225 187	79 708	223 259	868 346	538 690	695 238	3 413 043
<b>1997-98</b>	148 771	445 218	274 741	93 815	280 562	1 061 260	772 203	739 266	3 940 198
<b>1998-99</b>	162 784	271 492	281 097	96 052	264 732	917 879	812 096	765 643	3 716 152
<b>1998-99</b>									
August	15 000	18 697	14 930	8 217	24 495	83 417	67 746	66 505	308 231
September	14 111	12 616	22 609	8 647	25 446	73 876	63 421	63 209	292 070
October	15 828	11 640	18 150	9 116	23 219	82 586	78 648	59 588	310 764
November	15 327	36 487	23 598	7 876	21 420	75 548	70 427	71 943	334 583
December	13 026	16 970	18 804	6 467	19 204	75 018	64 460	59 286	283 700
January	12 745	17 413	35 290	6 819	21 549	79 714	58 788	59 244	306 685
February	11 547	31 555	29 787	7 365	19 645	64 860	68 686	56 383	302 155
March	16 139	26 963	29 953	7 757	23 301	71 981	77 956	79 638	348 969
April	12 634	25 605	34 572	8 490	22 564	67 602	73 535	57 729	314 900
May	9 387	27 892	24 936	8 295	18 148	75 202	49 320	55 967	283 113
June	12 748	22 304	15 461	7 490	19 168	72 618	67 354	71 583	301 272
<b>1999-00</b>									
July	14 835	58 324	16 552	8 454	19 097	82 015	78 647	64 793	355 421
August	12 100	27 827	14 026	8 245	19 964	80 979	72 081	65 337	311 632
September	15 546	92	17 923	8 064	20 823	104 085	68 474	73 985	320 361
October	16 262	42 269	14 472	7 989	19 249	81 573	71 316	69 221	332 742
November	19 698	81 584	18 586	7 806	20 637	75 748	59 410	73 532	369 559
December	15 025	73 789	25 811	6 381	22 425	120 636	49 074	69 906	395 109
January	10 849	40 216	27 097	6 948	20 703	71 678	56 368	61 721	308 510

(a) Restrictions are placed on the release of statistics for certain commodities for reasons of confidentiality. These restrictions do not affect total export and import figures, but they can affect some items within commodity, industry and country tables. See *International Trade* (Cat. no. 5422.0), Explanatory Notes, paragraph 30, for more details.

Source: Unpublished data, *International Merchandise Trade*.

## 9

## TURNOVER OF RETAIL ESTABLISHMENTS, BY INDUSTRY—TREND

Period	Food retailing	Department stores	Clothing and soft good retailing	Household good retailing	Recreational good retailing	Other retailing	Hospitality and services	Total
	\$m	\$m	\$m	\$m	\$m	\$m	\$m	\$m
<b>1998-99</b>								
November	388.9	91.3	45.6	83.0	31.8	77.5	125.6	843.0
December	392.5	91.3	45.5	83.5	31.8	78.6	124.6	846.3
January	395.0	91.5	45.8	83.6	27.3	79.3	124.4	848.7
February	395.5	91.6	46.5	83.3	27.6	79.5	125.3	848.4
March	394.3	91.3	47.3	82.7	27.6	79.5	126.7	845.8
April	382.3	91.0	48.3	82.3	27.6	79.5	127.8	842.4
May	380.5	90.8	49.2	82.7	27.5	79.7	128.4	840.2
June	380.3	91.1	49.9	84.3	27.4	80.4	128.9	842.4
<b>1999-00</b>								
July	381.7	91.8	50.6	86.7	27.7	81.6	129.9	849.6
August	384.4	92.7	51.3	89.3	28.3	83.4	131.4	860.4
September	386.8	93.5	51.9	91.1	28.9	85.4	133.3	870.6
October	387.7	93.7	52.1	92.3	29.2	87.0	135.2	877.0
November	387.6	93.6	52.1	93.0	29.2	88.2	136.9	880.5
December	387.1	93.3	52.0	93.4	29.0	89.1	138.4	882.9
January	385.9	92.9	51.8	93.5	28.7	89.6	139.7	883.1

Source: Retail Trade, Australia (Cat. no. 8501.0).

## 10

## NEW MOTOR VEHICLE REGISTRATIONS, BY TYPE OF VEHICLE

Period	Original			Seasonally adjusted			Trend estimate		
	Passenger vehicles	Other vehicles	Total	Passenger vehicles	Other vehicles	Total	Passenger vehicles	Other vehicles	Total
<b>1998-99</b>									
November	3 803	672	4 475	3 610	679	4 289	3 543	654	4 197
December	3 624	718	4 342	3 513	664	4 177	3 531	638	4 169
January	2 603	442	3 045	3 452	613	4 065	3 561	619	4 180
February	3 355	568	3 923	3 507	607	4 114	3 594	603	4 197
March	4 165	644	4 809	3 927	562	4 489	3 600	598	4 198
April	3 256	559	3 815	3 488	601	4 089	3 564	603	4 167
May	3 294	672	3 966	3 459	619	4 078	3 476	620	4 096
June	3 838	856	4 694	3 386	621	4 007	3 347	646	3 993
<b>1999-00</b>									
July	3 429	689	4 118	3 274	718	3 992	3 222	671	3 893
August	3 149	702	3 851	3 047	741	3 788	3 151	688	3 839
September	3 120	531	3 651	3 039	559	3 598	3 152	692	3 844
October	2 983	676	3 659	3 027	797	3 824	3 196	686	3 882
November	3 656	679	4 335	3 423	684	4 107	3 259	674	3 933
December	3 729	694	4 423	3 553	627	4 180	3 324	660	3 984
January	2 462	464	2 926	3 265	617	3 882	3 386	641	4 027

Source: Transport SA.

# 11

## ACTUAL PRIVATE NEW CAPITAL EXPENDITURE, BY SELECTED INDUSTRY AND TYPE OF ASSET

Period	Industry			Total	Type of asset	
	Mining	Manufacturing	Other selected industries		New buildings and structures	Equipment, plant and machinery
ANNUAL (\$m)						
<b>1996-97</b>	489	840	1 251	2 580	595	1 985
<b>1997-98</b>	1 366	820	1 006	3 192	792	2 400
<b>1998-99</b>	508	776	992	2 277	529	1 747
QUARTERLY, ORIGINAL (\$m)						
<b>1998-99</b>						
September	125	153	326	603	158	445
December	150	248	266	664	171	493
March	98	187	220	505	97	407
June	136	188	180	504	103	401
<b>1999-00</b>						
September	71	163	391	625	125	500
December	49	238	252	539	121	418
QUARTERLY, TREND (\$m)						
<b>1998-99</b>						
September	n.a.	n.a.	n.a.	673	186	487
December	n.a.	n.a.	n.a.	584	144	440
March	n.a.	n.a.	n.a.	554	117	437
June	n.a.	n.a.	n.a.	563	112	451
<b>1999-00</b>						
September	n.a.	n.a.	n.a.	563	112	451
December	n.a.	n.a.	n.a.	542	116	426

Source: State Estimates of Private New Capital Expenditure (Cat. no. 5646.0).

# 12

## TOURIST ACCOMMODATION

Period	Hotels with facilities				Motels and guesthouses				Serviced apartments			
	Estab-lish-ments	Guest rooms	Room occu-pancy	Takings	Estab-lish-ments	Guest rooms	Room occu-pancy	Takings	Estab-lish-ments	Guest rooms	Room occu-pancy	Takings
	no.	no.	%	\$'000	no.	no.	%	\$'000	no.	no.	%	\$'000
<b>1997-98</b>												
September	62	3 875	56.2	19 193	150	5 179	51.3	17 420	17	624	57.9	2 714
December	61	3 855	61.3	22 156	151	5 225	57.9	19 960	17	626	67.3	3 269
March	59	3 808	60.1	20 851	149	5 181	57.4	19 247	19	726	67.6	3 913
June	61	4 048	53.6	19 048	147	5 136	52.8	17 773	19	750	59.4	3 551
<b>1998-99</b>												
September	61	4 048	57.2	21 068	146	5 112	51.7	17 805	19	740	56.3	3 667
December	61	4 053	63.0	24 954	146	5 135	58.1	19 990	22	888	66.0	4 884
March	61	4 053	59.6	22 181	145	5 119	55.3	18 793	22	888	65.8	4 516
June	62	4 095	58.6	22 362	146	5 189	51.5	18 140	22	889	54.1	3 947
<b>1999-00</b>												
September	62	3 988	58.0	20 959	146	5 175	50.7	17 812	23	1 084	60.2	5 265

Source: Tourist Accommodation, Australia (Cat. no. 8635.0).

Period	Houses		Total dwelling units		New residential building \$m	Alterations and additions to residential building \$m	Total residential building \$m	Non-residential building \$m	Total building \$m
	Private sector	Total	Private sector	Total					
	no.	no.	no.	no.					
ANNUAL									
<b>1996-97</b>	5 512	5 608	6 148	6 264	515.5	116.6	632.1	580.7	1 212.8
<b>1997-98</b>	6 187	6 380	6 997	7 215	630.2	127.8	758.0	602.2	1 360.1
<b>1998-99</b>	6 568	6 777	7 697	7 928	775.6	143.9	919.6	656.6	1 576.2
MONTHLY, ORIGINAL									
<b>1998-99</b>									
January	361	371	434	444	45.6	9.5	55.1	68.0	123.1
February	494	510	591	607	58.2	12.4	70.6	118.4	189.0
March	644	683	711	750	69.1	14.6	83.7	61.1	144.9
April	487	497	558	568	56.6	10.8	67.4	22.7	90.1
May	601	631	653	683	69.5	11.4	80.9	57.4	138.3
June	652	673	814	845	72.3	16.5	88.8	31.7	120.5
<b>1999-00</b>									
July	615	620	837	842	101.8	14.1	115.9	31.7	147.6
August	663	669	765	771	76.4	15.5	91.9	37.5	129.4
September	731	772	866	907	88.5	15.9	104.3	49.2	153.5
October	667	681	777	794	79.6	14.0	93.7	31.6	125.2
November	892	904	981	993	101.4	15.5	116.9	36.2	153.1
December	736	736	842	842	85.8	13.4	99.2	129.5	228.8
January	649	649	712	712	69.7	11.4	81.1	18.5	99.6
MONTHLY, TREND									
<b>1998-99</b>									
January	531	549	606	629	59.0	11.9	70.8	61.7	132.6
February	536	555	620	642	61.3	12.3	73.6	57.9	131.5
March	543	561	634	655	64.0	12.7	76.7	53.1	129.8
April	551	569	651	670	67.0	13.2	80.1	47.1	127.2
May	559	576	670	687	69.8	13.6	83.4	41.0	124.4
June	572	588	691	706	72.5	14.0	86.5	34.3	120.8
<b>1999-00</b>									
July	592	608	714	729	75.1	14.2	89.3	31.9	121.2
August	625	641	745	761	78.0	14.3	92.3	35.1	127.4
September	674	690	786	803	81.3	14.2	95.5	42.6	138.1
October	733	749	837	853	85.3	14.1	99.4	51.8	151.1
November	795	811	897	911	89.6	14.1	103.7	60.3	164.0
December	853	869	958	969	93.9	14.2	108.1	66.6	174.7
January	905	920	1 014	1 022	97.0	14.4	111.4	69.6	181.0

Source: Building Approvals, South Australia (Cat. no. 8731.4).



## 14

## BUILDING COMMENCEMENTS

Period	New houses		Total dwelling units(a)		New residential building \$m	Alterations and additions to residential building \$m	Non-residential building		
	Private sector	Total	Private sector	Total			Private sector	Total	Total building
	no.	no.	no.	no.			\$m	\$m	\$m
<b>1996-97</b>	5 057	5 112	5 727	5 789	496.3	116.9	423.4	568.7	1 181.9
<b>1997-98</b>	5 628	5 823	6 437	6 653	614.7	134.5	426.4	550.7	1 299.9
<b>1998-98</b>	6 091	6 296	7 186	7 416	771.3	139.7	400.1	623.7	1 534.7
<b>1997-98</b>									
September	1 354	1 402	1 489	1 541	131.9	31.6	84.5	112.3	275.8
December	1 531	1 588	1 841	1 906	179.8	33.8	139.2	174.1	387.7
March	1 409	1 436	1 617	1 648	150.1	38.7	68.1	95.2	284.0
June	1 334	1 397	1 490	1 558	152.9	30.4	134.5	169.1	352.4
<b>1998-99</b>									
September	1 563	1 610	1 927	1 980	184.7	35.0	89.5	131.1	350.7
December	1 644	1 699	1 891	1 965	231.1	34.3	94.6	134.8	400.2
March	1 293	1 326	1 612	1 645	171.6	32.7	145.6	235.5	439.8
June	1 591	1 661	1 756	1 826	183.9	37.8	71.0	122.9	344.6
<b>1999-00</b>									
September	1 741	1 781	2 103	2 153	250.0	42.6	83.4	108.7	401.2

(a) Includes conversions.

Source: *Building Activity, South Australia* (Cat. no. 8752.4).

## VALUE OF BUILDING WORK DONE AND COMPLETED DURING PERIOD

Period	New houses		New residential building			Non-residential building		Total building		
	Private sector	Total	Private sector	Total	Alterations and additions to residential building	Total residential building	Private sector	Total	Private sector	Total
	\$m	\$m	\$m	\$m	\$m	\$m	\$m	\$m	\$m	\$m
VALUE OF BUILDING WORK DONE										
<b>1996-97</b>	433.9	438.9	485.2	490.4	122.3	612.7	444.2	663.3	1 049.8	1 275.9
<b>1997-98</b>	522.9	535.7	590.4	605.4	131.6	737.0	538.9	685.0	1 259.3	1 422.0
<b>1998-99</b>	599.4	614.6	720.8	737.7	147.7	885.4	417.1	571.6	1 283.8	1 457.0
<b>1997-98</b>										
September	122.5	125.8	136.3	139.9	32.9	172.8	149.8	186.7	318.5	359.4
December	134.0	137.7	152.3	157.1	36.2	193.3	157.7	197.7	345.2	391.0
March	130.5	132.8	147.4	149.9	31.4	181.3	119.1	149.2	297.7	330.4
June	135.9	139.4	154.5	158.5	31.2	189.7	112.3	151.5	297.9	341.1
<b>1998-99</b>										
September	150.9	155.8	175.8	180.9	39.8	220.7	135.5	162.9	350.5	383.6
December	151.4	155.1	185.6	189.9	40.3	230.1	121.5	160.4	347.0	390.6
March	142.4	144.9	169.5	172.5	33.2	205.7	87.5	131.1	290.1	336.8
June	154.7	158.9	189.9	194.4	34.4	228.9	72.6	117.2	296.2	346.1
<b>1999-00</b>										
September	166.6	171.5	212.4	218.0	41.1	259.1	116.8	171.6	369.3	430.6
VALUE OF BUILDING WORK COMPLETED										
<b>1996-97</b>	408.9	414.1	461.8	467.1	123.6	590.7	328.2	584.3	911.8	1 175.0
<b>1997-98</b>	504.1	514.7	561.8	574.7	125.0	699.7	571.2	744.0	1 256.3	1 443.7
<b>1998-99</b>	600.6	614.8	700.0	715.2	153.2	868.4	505.3	639.4	1 356.8	1 507.8
<b>1997-98</b>										
September	118.3	120.5	130.5	132.7	34.3	166.9	68.9	102.6	233.1	269.5
December	148.3	151.6	168.9	172.8	39.2	212.1	310.5	369.2	517.7	581.2
March	112.2	114.5	126.4	129.3	26.9	156.3	81.7	124.3	235.0	280.5
June	125.3	128.1	136.0	139.8	24.6	164.4	110.1	148.0	270.6	312.5
<b>1998-99</b>										
September	148.1	152.4	161.1	165.8	36.1	201.9	68.2	106.7	264.9	308.6
December	168.4	174.1	190.2	196.1	49.3	245.4	174.9	203.3	414.1	448.7
March	145.1	147.6	180.1	183.0	36.7	219.7	161.3	207.4	377.8	427.1
June	139.0	140.7	168.6	170.3	31.0	201.4	101.0	122.0	300.0	323.3
<b>1999-00</b>										
September	148.6	153.6	169.6	176.3	38.0	214.3	67.1	97.3	274.0	311.6

Source: Building Activity, South Australia (Cat. no. 8752.4).

<i>Period</i>	<i>Pigmeat</i>	<i>Beef</i>	<i>Mutton</i>	<i>Lamb</i>	<i>Gas</i>	<i>Coal(a)</i>	<i>Sawn timber(b)</i>
	<i>tonnes</i>	<i>tonnes</i>	<i>tonnes</i>	<i>tonnes</i>	<i>m MJ</i>	<i>tonnes</i>	<i>m<sup>3</sup></i>
<b>1996-97</b>	29 842	85 478	51 778	34 890	76 495	2 633 820	333 691
<b>1997-98</b>	28 489	80 924	58 554	38 224	78 441	2 815 870	361 257
<b>1998-99</b>	30 864	62 266	48 029	44 172	86 228	2 686 069	374 590
<b>1997-98</b>							
December	6 301	22 324	16 769	9 963	18 997	610 208	83 957
March	6 731	21 110	20 144	10 561	18 098	718 990	89 540
June	7 923	18 786	10 752	11 106	19 404	733 804	96 223
<b>1998-99</b>							
September	6 782	15 160	10 348	10 738	23 573	748 575	95 339
December	7 269	17 609	15 737	10 997	19 718	671 040	94 578
March	8 031	14 780	14 029	10 101	19 343	826 095	88 282
June	8 782	14 717	7 915	12 337	23 594	440 359	96 391
<b>1999-00</b>							
September	7 294	17 107	5 654	11 492	22 162	783 227	111 075
December	7 504	18 395	8 713	11 941	20 992	684 296	93 802

(a) Data supplied by Flinders Power Pty Ltd.

(b) From Australian softwood logs only.

Source: *Livestock Products, Australia (Cat. no. 7215.0); Unpublished data, Manufacturing Production.*

<i>Period</i>	<i>Food</i>	<i>Clothing</i>	<i>Housing</i>	<i>Household equipment and operation</i>	<i>Transport- ation</i>	<i>Tobacco and alcohol</i>	<i>Health and personal care</i>	<i>Recreation and education</i>	<i>All groups</i>
ANNUAL AVERAGE (1989-90 = 100.0)									
<b>1996-97</b>	120.8	105.5	98.9	113.4	124.6	165.3	165.4	121.1	122.3
<b>1997-98</b>	122.7	105.7	90.7	113.7	122.1	169.3	165.4	124.7	121.6
<b>1998-99</b>	127.7	105.0	92.0	113.3	121.6	171.8	164.2	127.5	123.2
QUARTERLY (1989-90 = 100.0)									
<b>1998-99</b>									
September	125.9	105.3	91.2	113.7	121.8	170.7	171.8	125.9	123.0
December	128.2	105.4	91.9	113.9	121.3	171.4	170.9	126.5	123.6
March	128.0	103.7	92.2	112.3	120.9	171.8	156.6	128.6	122.7
June	128.8	105.7	92.8	113.2	122.4	173.3	157.5	128.9	123.6
<b>1999-00</b>									
September	129.7	104.8	95.0	112.5	127.8	174.4	157.6	129.8	125.1
December	130.4	102.5	96.9	112.7	127.4	177.8	157.1	129.8	125.7
PERCENTAGE CHANGE FROM SAME QUARTER OF PREVIOUS YEAR									
<b>1998-99</b>									
September	3.2	-0.1	-1.1	0.1	-1.1	2.1	8.3	1.8	1.5
December	5.1	-0.8	1.9	0.3	-0.8	1.5	4.1	2.3	2.0
March	4.1	-1.3	2.6	-1.2	-0.2	0.6	-6.7	2.5	0.8
June	4.1	-0.2	2.8	-0.6	0.5	1.6	-7.9	2.2	1.0
<b>1999-00</b>									
September	3.0	-0.5	4.2	-1.1	4.9	2.2	-8.3	3.1	1.7
December	1.7	-2.8	5.4	-1.1	5.0	3.7	-8.1	2.6	1.7
PERCENTAGE CHANGE FROM PREVIOUS QUARTER									
<b>1998-99</b>									
September	1.8	-0.6	1.0	-0.2	0.0	0.1	0.4	-0.2	0.5
December	1.8	0.1	0.8	0.2	-0.4	0.4	-0.5	0.5	0.5
March	-0.2	-1.6	0.3	-1.4	-0.3	0.2	-8.4	1.7	-0.7
June	0.6	1.9	0.7	0.8	1.2	0.9	0.6	0.2	0.7
<b>1999-00</b>									
September	0.7	-0.9	2.4	-0.6	4.4	0.6	0.1	0.7	1.2
December	0.5	-2.2	2.0	0.2	-0.3	1.9	-0.3	0.0	0.5

Source: Consumer Price Index (Cat. no. 6401.0).

# 18

## ESTIMATED RESIDENT POPULATION AND COMPONENTS OF POPULATION CHANGE

Period	Net migration			Total increase	Population at end of period
	Natural increase	Interstate	Overseas(a)		
<b>1996-97</b>	6 951	-4 628	3 104	5 427	1 479 680
<b>1997-98</b>	6 602	-3 254	3 390	7 638	1 486 418
<b>1998-99</b>	6 593	-2 869	2 932	6 656	1 493 074
<b>1997-98</b>					
December	1 650	-1 098	519	1 071	1 482 432
March	2 074	-591	1 291	2 744	1 485 206
June	1 471	-810	551	1 212	1 486 418
<b>1998-99</b>					
September	1 188	-422	778	1 544	1 487 962
December	1 775	-901	707	1 581	1 489 543
March	1 917	-682	1 149	2 384	1 491 927
June	1 713	-864	298	1 147	1 493 074
<b>1999-00</b>					
September	1 515	-600	784	1 699	1 494 773

(a) Includes category jumping.

Source: Australian Demographic Statistics (Cat. no. 3101.0).

# 19

## BIRTHS, DEATHS, MARRIAGES AND DIVORCES

Period	Registrations			
	Births	Deaths	Marriages	Divorces
<b>1996-97</b>	18 576	11 625	8 003	4 362
<b>1997-98</b>	18 330	11 728	7 988	4 113
<b>1998-99</b>	18 277	11 684	8 033	4 201
<b>1997-98</b>				
December	4 539	2 889	2 680	1 058
March	4 599	2 525	2 405	1 016
June	4 479	3 008	1 824	1 005
<b>1998-99</b>				
September	4 648	3 460	1 294	1 053
December	4 545	2 770	2 499	1 085
March	4 490	2 573	2 471	929
June	4 594	2 881	1 769	1 134
<b>1999-00</b>				
September	4 722	3 207	1 259	1 058

Source: Australian Demographic Statistics (Cat. no. 3101.0).

Period	Employed full-time		Employed part-time		Total employed		Unemployed		Labour force	
	Males	Females	Males	Females	Males	Females	Males	Females	Males	Females
ANNUAL AVERAGE ('000)										
<b>1996-97</b>	320.8	150.5	48.6	140.7	369.4	291.2	42.1	27.5	411.5	318.7
<b>1997-98</b>	317.5	145.9	48.8	136.4	366.3	282.3	42.1	28.8	408.4	311.0
<b>1998-99</b>	319.4	148.1	49.2	136.2	368.6	284.3	40.2	26.6	408.8	310.9
MONTHLY, ORIGINAL ('000)										
<b>1998-99</b>										
December	323.6	150.8	51.0	141.7	374.6	292.5	42.1	24.7	416.6	317.3
January	315.4	147.2	49.5	131.2	364.9	278.4	45.4	29.5	410.3	308.0
February	320.7	150.6	51.1	134.4	371.8	285.0	40.6	28.3	412.4	313.3
March	322.9	147.4	48.0	141.1	370.8	288.5	38.6	27.7	409.4	316.2
April	316.4	149.2	50.9	138.6	367.4	287.8	35.2	24.0	402.5	311.8
May	318.6	152.9	53.7	132.8	372.3	285.7	36.6	27.2	408.9	312.9
June	319.3	146.3	55.9	141.8	375.3	288.1	31.0	25.0	406.3	313.1
<b>1999-00</b>										
July	320.3	152.1	53.7	137.4	374.0	289.5	30.7	23.6	404.7	313.1
August	315.4	151.1	56.0	137.4	371.3	288.5	36.5	24.5	407.9	313.0
September	317.6	150.9	56.6	144.0	374.2	294.9	34.1	26.4	408.3	321.3
October	313.7	153.7	59.4	138.8	373.1	292.5	37.4	25.0	410.5	317.5
November	317.5	153.7	55.0	146.7	372.5	300.4	34.4	21.5	406.8	321.9
December	326.8	160.3	59.7	145.3	386.6	305.6	35.0	24.2	421.6	329.8
January	317.4	147.6	56.7	144.4	374.1	292.1	36.8	24.9	410.9	317.0
February	328.4	154.9	52.6	136.7	381.0	291.5	38.1	30.4	419.2	322.0
MONTHLY, TREND ('000)										
<b>1998-99</b>										
December	318.8	147.3	49.6	138.9	368.4	286.2	41.4	25.9	409.8	312.1
January	319.3	147.6	49.8	139.0	369.1	286.6	40.5	25.8	409.6	312.4
February	320.1	148.2	49.8	138.5	369.9	286.7	39.4	25.8	409.3	312.5
March	320.9	149.1	49.8	137.6	370.7	286.7	38.0	25.8	408.7	312.5
April	321.3	150.0	50.3	137.1	371.6	287.1	36.7	25.8	408.3	312.9
May	320.9	150.8	51.5	136.8	372.4	287.6	35.5	25.8	407.9	313.4
June	319.7	151.3	53.2	137.0	372.9	288.3	34.9	25.8	407.8	314.1
<b>1999-00</b>										
July	318.2	151.8	55.0	137.5	373.2	289.3	34.6	25.8	407.8	315.1
August	316.8	152.3	56.5	138.6	373.3	290.9	34.7	25.7	408.0	316.6
September	316.0	152.7	57.6	140.0	373.6	292.7	34.9	25.3	408.5	318.0
October	316.2	152.8	58.0	141.8	374.2	294.6	35.0	24.9	409.2	319.5
November	317.2	152.8	58.2	143.2	375.4	296.0	35.1	24.7	410.5	320.7
December	318.9	152.5	58.1	144.6	377.0	297.1	35.0	24.6	412.0	321.7
January	320.9	152.2	57.6	145.4	378.5	297.6	34.9	24.7	413.4	322.3
February	323.0	151.8	57.0	146.0	380.0	297.8	34.8	24.9	414.8	322.7

(a) Population aged 15 and over.

Source: Labour Force, Australia, Preliminary (Cat. no. 6202.0).

Period	Civilian population			Unemployment rate			Participation rate		
	Males aged 15 and over	Females aged 15 and over	Persons aged 15-19	Males all ages	Females all ages	Persons all ages	Males	Females	Persons
	'000	'000	%	%	%	%	%	%	%
ANNUAL AVERAGE									
<b>1996-97</b>	579.8	600.6	23.7	10.2	8.6	9.5	71.0	53.1	61.9
<b>1997-98</b>	583.9	604.5	23.2	10.3	9.2	9.8	70.8	51.5	61.0
<b>1998-99</b>	583.2	609.8	21.7	9.8	8.6	9.3	70.1	51.0	60.3
MONTHLY, ORIGINAL									
<b>1998-99</b>									
December	583.0	609.7	19.8	10.1	7.8	9.1	71.5	52.0	61.5
January	583.4	610.1	20.1	11.1	9.6	10.4	70.3	50.5	60.2
February	583.8	610.5	20.4	9.8	9.0	9.5	70.6	51.3	60.8
March	584.2	610.9	21.8	9.4	8.8	9.1	70.1	51.8	60.7
April	584.6	611.3	17.9	8.7	7.7	8.3	68.9	51.0	59.7
May	585.0	611.6	24.8	8.9	8.7	8.8	69.9	51.2	60.3
June	585.3	611.9	21.6	7.6	8.0	7.8	69.4	51.2	60.1
<b>1999-00</b>									
July	585.7	612.3	21.4	7.6	7.5	7.6	69.1	51.1	59.9
August	586.0	612.6	22.1	9.0	7.8	8.5	69.6	51.1	60.1
September	586.4	613.0	20.6	8.4	8.2	8.3	69.6	52.4	60.8
October	586.8	613.3	21.1	9.1	7.9	8.6	70.0	51.8	60.7
November	587.1	613.6	22.1	8.5	6.7	7.7	69.3	52.5	60.7
December	587.5	613.8	20.0	8.3	7.3	7.9	71.8	53.7	62.5
January	587.8	614.0	21.8	9.0	7.8	8.5	69.9	51.6	60.6
February	588.1	614.2	23.3	9.1	9.5	9.3	71.3	52.4	61.6
MONTHLY, TREND									
<b>1998-99</b>									
December	n.a.	n.a.	n.a.	10.1	8.3	9.3	70.3	51.2	60.5
January	n.a.	n.a.	n.a.	9.9	8.3	9.2	70.2	51.2	60.5
February	n.a.	n.a.	n.a.	9.6	8.3	9.0	70.1	51.2	60.4
March	n.a.	n.a.	n.a.	9.3	8.3	8.9	70.0	51.2	60.4
April	n.a.	n.a.	n.a.	9.0	8.2	8.7	69.8	51.2	60.3
May	n.a.	n.a.	n.a.	8.7	8.2	8.5	69.7	51.2	60.3
June	n.a.	n.a.	n.a.	8.5	8.2	8.4	69.7	51.3	60.3
<b>1999-00</b>									
July	n.a.	n.a.	n.a.	8.5	8.2	8.4	69.6	51.5	60.4
August	n.a.	n.a.	n.a.	8.5	8.1	8.3	69.6	51.7	60.4
September	n.a.	n.a.	n.a.	8.5	8.0	8.3	69.7	51.9	60.6
October	n.a.	n.a.	n.a.	8.6	7.8	8.2	69.8	52.1	60.7
November	n.a.	n.a.	n.a.	8.5	7.7	8.2	69.9	52.3	60.9
December	n.a.	n.a.	n.a.	8.5	7.6	8.1	70.1	52.4	61.1
January	n.a.	n.a.	n.a.	8.5	7.7	8.1	70.3	52.5	61.2
February	n.a.	n.a.	n.a.	8.4	7.7	8.1	70.5	52.5	61.3

(a) Population aged 15 and over.

Source: Labour Force, Australia, Preliminary (Cat. no. 6202.0).

## AVERAGE WEEKLY EARNINGS OF EMPLOYEES

Period	Males			Females			Persons		
	Full-time adult ordinary time earnings	Full-time adult total earnings	All males total earnings	Full-time adult ordinary time earnings	Full-time adult total earnings	All females total earnings	Full-time adult ordinary time earnings	Full-time adult total earnings	All employees total earnings
ANNUAL AVERAGE (\$ per week)									
<b>1996-97</b>	678.20	735.10	636.90	575.10	589.40	408.70	644.30	687.20	529.80
<b>1997-98</b>	705.60	755.05	646.28	606.05	619.33	438.50	670.53	707.20	545.70
<b>1998-99</b>	741.20	797.55	678.28	627.93	647.28	464.35	699.13	741.70	575.23
QUARTERLY, ORIGINAL (\$ per week)									
<b>1998-99</b>									
21 August	737.50	785.60	670.40	623.50	636.30	462.10	694.70	729.60	569.60
20 November	745.20	811.60	679.00	631.50	652.90	471.50	702.50	752.00	580.30
19 February	739.90	796.20	677.40	632.00	651.90	466.50	699.60	742.30	574.90
21 May	742.20	796.80	686.30	624.70	648.00	457.30	699.70	742.90	576.10
<b>1999-00</b>									
20 August	742.70	792.00	669.30	631.20	655.70	451.20	702.00	742.20	560.40
19 November	745.30	805.60	697.40	638.70	663.40	453.80	705.70	752.70	572.80
QUARTERLY, TREND (\$ per week)									
<b>1998-99</b>									
21 August	734.30	788.10	668.30	627.90	643.90	463.80	694.90	734.60	570.10
20 November	742.10	799.50	678.50	628.80	646.60	468.70	699.40	742.20	577.90
19 February	742.90	800.30	678.50	628.70	649.70	465.30	700.40	744.40	575.80
21 May	741.30	796.60	677.30	628.80	652.20	458.10	700.30	743.60	570.40
<b>1999-00</b>									
20 August	743.40	798.10	684.00	632.30	656.70	454.00	702.90	746.30	569.70
19 November	748.50	804.20	696.50	637.90	662.30	453.00	707.30	751.90	573.30

Source: Average Weekly Earnings, States and Australia (Cat. no. 6302.0).



## 23

## SECURED HOUSING FINANCE COMMITMENTS(a)

Period	Original		Seasonally adjusted		Trend	
	Dwelling units	Value	Dwelling units	Value	Dwelling units	Value
	no.	\$m	no.	\$m	no.	\$m
<b>1998-99</b>						
November	3 000	278	2 885	265	2 913	261
December	3 151	294	3 083	279	2 949	267
January	2 392	216	2 964	268	2 998	273
February	3 019	274	3 045	277	3 050	279
March	3 718	344	3 134	289	3 107	285
April	3 162	290	3 138	288	3 166	293
May	3 237	301	3 226	301	3 238	303
June	3 592	342	3 335	321	3 341	318
<b>1999-00</b>						
July	3 397	319	3 502	332	3 474	335
August	3 419	331	3 561	349	3 614	351
September	3 545	349	3 573	354	3 738	366
October	3 708	370	4 106	407	3 829	376
November	4 310	422	4 038	393	3 886	382
December	3 924	390	3 786	363	3 914	386
January	3 123	314	3 768	383	3 915	388

(a) Excludes alterations and additions. Includes refinancing.

Source: *Housing Finance for Owner Occupation, Australia (Cat. no. 5609.0)*.

## 24

## FINANCE COMMITMENTS

Period	Commercial finance commitments			Personal finance commitments			Total lease finance commitments
	Fixed loan facilities	Revolving credit facilities	Total commercial finance commitments	Fixed loan facilities	Revolving credit facilities	Total personal finance commitments	
	\$m	\$m	\$m	\$m	\$m	\$m	
<b>1998-99</b>							
November	355.3	166.0	521.2	116.2	140.0	256.2	22.6
December	305.8	268.2	574.0	119.0	155.1	274.2	17.4
January	189.3	120.6	309.9	119.0	117.6	236.6	21.8
February	288.2	199.0	487.3	122.3	133.2	255.5	19.3
March	489.8	390.3	880.1	147.2	174.1	321.3	24.6
April	268.6	459.1	727.7	113.0	138.9	251.9	32.8
May	272.4	202.3	474.7	120.9	131.5	252.5	39.3
June	356.6	382.2	738.9	135.0	140.7	275.7	40.6
<b>1999-00</b>							
July	253.4	261.8	515.2	122.6	132.1	254.7	23.4
August	412.9	255.3	668.3	124.3	127.6	251.9	26.6
September	265.9	206.5	472.4	126.6	140.0	266.6	19.8
October	325.5	209.8	535.3	125.0	128.0	253.0	14.7
November	289.4	221.8	511.2	128.9	151.3	280.2	12.7
December	380.7	296.0	676.8	124.7	143.8	268.5	13.4
January	273.2	244.8	518.0	122.8	93.4	216.2	10.2

Source: *Unpublished data, PC Ausstats*.

## PUBLICATIONS SOURCE INDEX

- (1) *Australian National Accounts, Quarterly State Details*  
(Cat. no. 5206.0.40.001)
- (2) *International Merchandise Trade, Australia*  
(Cat. no. 5422.0) Quarterly
- (3) *Retail Trade, Australia* (Cat. no. 8501.0) Monthly
- (4) *New Motor Vehicles Registrations, Australia, Preliminary*  
(Cat. no. 9301.0) Monthly
- (5) *State Estimates of Private New Capital Expenditure*  
(Cat. no. 5646.0) Quarterly
- (6) *Tourist Accommodation, Australia* (Cat. no. 8635.0) Quarterly
- (7) *Building Approvals, Australia* (Cat. no. 8731.0) Monthly
- (8) *Building Activity, Australia* (Cat. no. 8752.0) Quarterly
- (8a) *Building Activity, Australia, Dwelling Unit Commencements, Preliminary* (Cat. no. 8750.0) Quarterly
- (9) *Engineering Construction Activity, Australia*  
(Cat. no. 8762.0) Quarterly
- (10) *Manufacturing Production, Australia, Preliminary*  
(Cat. no. 8301.0) Quarterly
- (11) *Livestock Products, Australia* (Cat. no. 7215.0) Quarterly
- (12) *Actual and Expected Private Mineral Exploration, Australia*  
(Cat. no. 8412.0) Quarterly
- (13) *Consumer Price Index* (Cat. no. 6401.0) Quarterly
- (14) *Price Index of Materials Used in House Building, Six State Capital Cities and Canberra* (Cat. no. 6408.0) Quarterly
- (15) *Price Index of Materials Used in Building Other Than House Building, Six State Capital Cities and Canberra*  
(Cat. no. 6407.0) Quarterly
- (16) *House Price Indexes: Eight Capital Cities*  
(Cat. no. 6416.0) Quarterly
- (17) *Australian Demographic Statistics* (Cat. no. 3101.0) Quarterly
- (18) *Labour Force, Australia, Preliminary* (Cat. no. 6202.0) Monthly
- (19) *Job Vacancies, Australia* (Cat. no. 6354.0) Quarterly
- (20) *Industrial Disputes, Australia* (Cat. no. 6321.0) Monthly
- (21) Unpublished overseas arrival and departure statistics
- (22) *Average Weekly Earnings, States and Australia*  
(Cat. no. 6302.0) Quarterly
- (23) *Wage Cost Index, Australia* (Cat. no. 6345.0) Quarterly
- (24) *Housing Finance for Owner Occupation, Australia*  
(Cat. no. 5609.0) Monthly
- (25) Unpublished statistics available from PC AUSSTATS
- (26) *Reserve Bank of Australia Bulletin*



## FOR MORE INFORMATION...

- INTERNET* **www.abs.gov.au** the ABS web site is the best place to start for access to summary data from our latest publications, information about the ABS, advice about upcoming releases, our catalogue, and Australia Now—a statistical profile.
- LIBRARY* A range of ABS publications is available from public and tertiary libraries Australia-wide. Contact your nearest library to determine whether it has the ABS statistics you require, or visit our web site for a list of libraries.
- CPI INFOLINE* For current and historical Consumer Price Index data, call 1902 981 074 (call cost 75c per minute).
- DIAL-A-STATISTIC* For the latest figures for National Accounts, Balance of Payments, Labour Force, Average Weekly Earnings, Estimated Resident Population and the Consumer Price Index call 1900 986 400 (call cost 75c per minute).

### INFORMATION SERVICE

Data that are already published and can be provided within five minutes are free of charge. Our information consultants can also help you to access the full range of ABS information—ABS user pays services can be tailored to your needs, time frame and budget. Publications may be purchased. Specialists are on hand to help you with analytical or methodological advice.

- PHONE* **1300 135 070**
- EMAIL* **client.services@abs.gov.au**
- FAX* 1300 135 211
- POST* Client Services, ABS, GPO Box 796, Sydney 1041

## WHY NOT SUBSCRIBE?

ABS subscription services provide regular, convenient and prompt deliveries of ABS publications and products as they are released. Email delivery of monthly and quarterly publications is available.

- PHONE* 1300 366 323
- EMAIL* subscriptions@abs.gov.au
- FAX* 03 9615 7848
- POST* Subscription Services, ABS, GPO Box 2796Y, Melbourne 3001



2130740004001

ISSN 1039-8880

RRP \$17.00

© Commonwealth of Australia 2000

Produced by the Australian Bureau of Statistics